

HMF 735-K



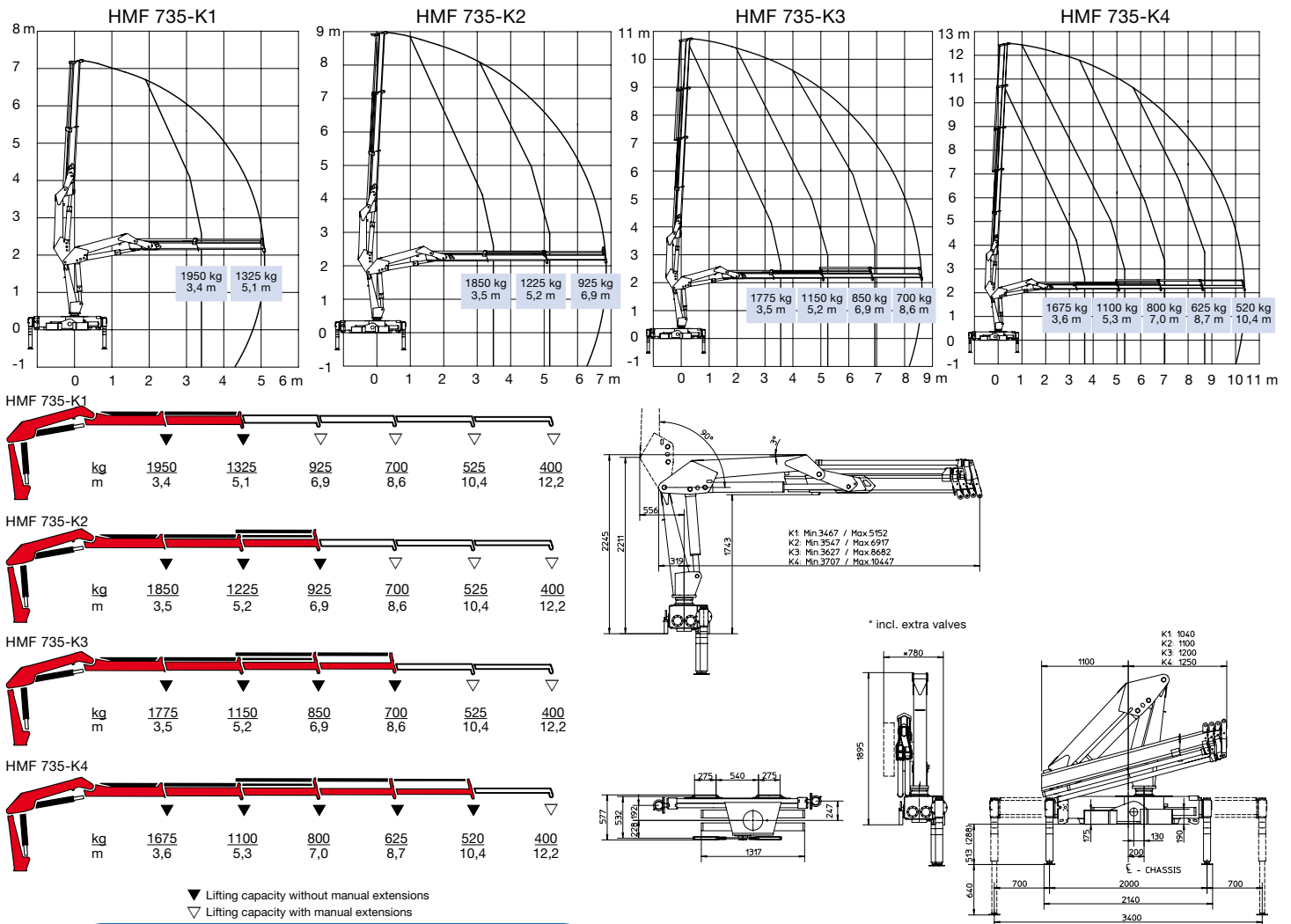
- power to lift.

HMF Knuckle Boom Loader 735-K

HMF loader Series 735-K in the 7 tm range

- The HMF 735-K is a loader with a hydraulic reach and lifting capacity second to none within this category.
- Equipped with manual extensions, the total reach is 12.2 metres
- with a lifting capacity of 400 kg.
- Oil regeneration system in all extension cylinders, providing high working speeds on the movements of the jib extension system.
- Excellent close-range lifting capacities combined with a long out-reach and high working speed make the loader very flexible.
- The 735-K is suitable for hook applications as well as hydraulic accessory applications such as grab and rotator.
- Is available with three different stabilizer spreads, which means that the 735-K can be fitted on a wide range of trucks without losing stability.
- Available as standard with HMF's totally integrated user-friendly RCL Safety System, which only intervenes when absolutely necessary.
- The loader series is available with the following options: radio remote control, winch, transport alarm and temperature monitoring.

| Loading group B3 | | 735-K1 | 735-K2 | 735-K3 | 735-K4 |
|-------------------------------------|-------|--------|--------|--------|--------|
| Load moment | tm | 6.7 | 6.5 | 6.3 | 6.1 |
| Hydraulic reach | m | 5.2 | 7.0 | 8.7 | 10.5 |
| Slewing torque | kgm | 1375 | 1375 | 1375 | 1375 |
| Slewing angle | ° | 400 | 400 | 400 | 400 |
| Height above chassis | mm | 1895 | 1895 | 1895 | 1895 |
| Width, folded | mm | 2200 | 2200 | 2300 | 2350 |
| Length of loader, no extra valves | mm | 595 | 595 | 595 | 595 |
| Length of loader, with extra valves | mm | 780 | 780 | 780 | 780 |
| Stabilizer spread, standard | mm | 3400 | 3400 | 3400 | 3400 |
| Stabilizer spread, extra long | mm | 4760 | 4760 | 4760 | 4760 |
| Stabilizer spread, double extension | mm | 5500 | 5500 | 5500 | 5500 |
| Weight excl. stabilizers | kg | 865 | 940 | 1005 | 1065 |
| Weight of stabilizers, standard | kg | 125 | 125 | 125 | 125 |
| Working pressure | MPa | 27.5 | 27.5 | 27.5 | 27.5 |
| Pump performance | l/min | 30 | 30 | 25 | 25 |
| Oil capacity in base | l | 35 | 35 | 35 | 35 |
| Power consumption | kW | 14.7 | 14.7 | 12.3 | 12.3 |
| Hook height 1 m from column | m | 2.5 | 2.4 | 2.3 | 2.2 |



Z008372-3

We reserve the right to introduce improvements and modifications



Højbjerg Maskinfabrik A/S • Oddervej 200 • DK-8270 Højbjerg
Tel.: +45 8627 0800 • Fax: +45 8627 0744 • info@hmf.dk

www.hmf.dk